

**CENTRAL ISLIP BOARD OF
EDUCATION**

Norman A. Wagner
President

Michele Harriott
Vice President

Members:
Fred Philips
Daniel M. Devine
William G. Softy
Glenn C. Mitchell
Jim Musumeci

ADMINISTRATION

Sharon A. Dungee
Superintendent of Schools

Leila Holmes
Interim Assistant Superintendent for Curriculum
and Instruction

Sharon Morgan
Interim School Business Administrator

Dr. Mariana A. Gil
Administrator for Bilingual/ENL and World
Languages Programs

BILINGUAL/ENL DEPARTMENT

1 BROADWAY AVENUE
CENTRAL ISLIP, NEW YORK, 11722
631-348 5195



www.cischools.org



Central Islip Children... Our Future
Diversity... Our Strength.

Adapted by Dr. Rosa E. Lien

Central Islip School District

**PROGRAMS FOR
PRE-KINDERGARTEN
STUDENTS
TRANSITIONAL
BILINGUAL OR
MONOLINGUAL**



ENGLISH LANGUAGE LEARNERS

Benefits for your child!

ELLEGIBILITY FOR THE TRANSITIONAL BILINGUAL EDUCATION (TBE):

- If it is determined by an informal **English/Spanish LAB** diagnostic assessment that your child is an English Language Learner/Multilingual Learner (ELL/MLL) your son /daughter will qualify for one of the following programs where he/she will receive the necessary support to learn/increase his/her English skills:

TRANSITIONAL BILINGUAL EDUCATION (TBE) PROGRAM:

- This program includes language and subject matter instruction in the student's home language as well as instruction in English as a New Language (ENL). As the student develops proficiency in English by transferring language and academic skills from the home language, instruction in English increases and home language instruction decreases;

Or

MONOLINGUAL PROGRAM:

- This program offers instruction in English only. **All subjects are taught in English.**

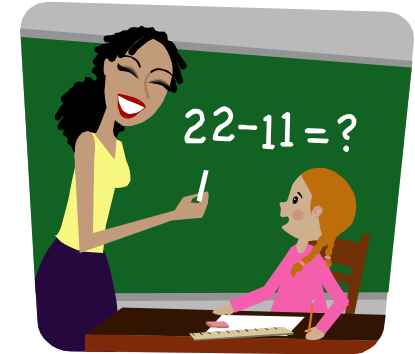
ENGLISH LANGUAGE LEARNERS INSTRUCTION:

- All students in bilingual education must receive instruction in both languages.
- Language arts, reading and mathematics are subjects required by the state of New York.



TEACHERS RESPONSIBLE FOR TEACHING A TRANSITIONAL BILINGUAL EDUCATION PROGRAM AND MONOLINGUAL:

- Teachers must have the bilingual extension in order to meet the special language needs of their students.



PARENTS BECOME INVOLVED IN THE TRANSITIONAL BILINGUAL EDUCATION PROGRAM AND MONOLINGUAL:

- Parental approval is required for students to participate in the program.
- Parents can encourage their child to achieve, provide a place to study, and show interest in schoolwork.
- Parents can ask their child's teacher or principal about becoming more involved in school activities.